

## Industrial Cartridge Housings - Polypropylene

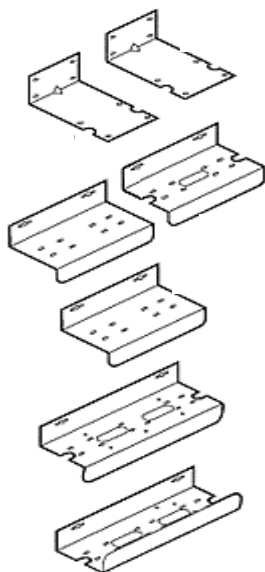
Filtertek filter housings have been carefully designed for maximum performance and long-life durability. Leak proof sealing is accomplished by cap compression against a top seated EPDM O-ring in the sump (note Viton in hot/ high pressure and Silicone in natural models). The buttress thread closure allows for years of



cartridge change-outs without failure. Thick walls and a multi-rib design make these housings ideal for industrial applications. All caps have mounting bosses for rigid 'L' bracket mounting. Knife edge seals come as standard, in addition natural housings accommodate 222 end cap configurations. Filtertek plastic filter housings are available in 5", 10" & 20" models to accept industry standard cartridges. Large diameter models are also available in 10" & 20" designs.



### Mounting bracket options

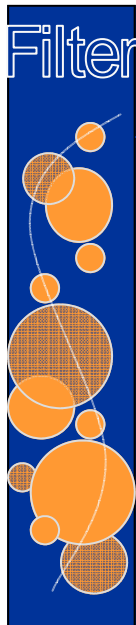


### Specifications

Material sump & caps, standard: FDA grade polypropylene.  
 Material O-ring, standard: EPDM.  
 Maximum operating temperature, standard: 125°F (52°C).  
 Maximum pressure, standard: 125 psi (8.75 bar).  
 Minimum temperature, standard: 40°F (4°C).

Material sump & caps, high temp: Glass reinforced nylon  
 Material O-ring, high temp: Viton  
 Maximum operating temperature, high temp: 200°F (93°C).  
 Maximum pressure, high temp: 125 psi (8.75 bar).  
 Minimum temperature, high temp: 40°F (4°C).

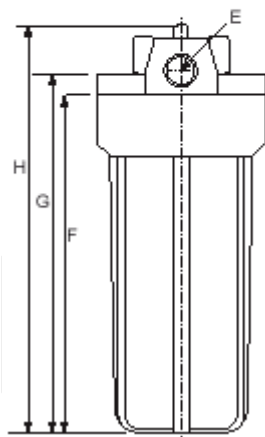
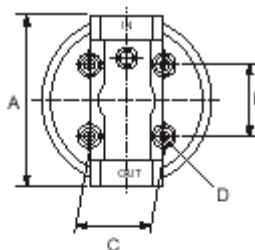
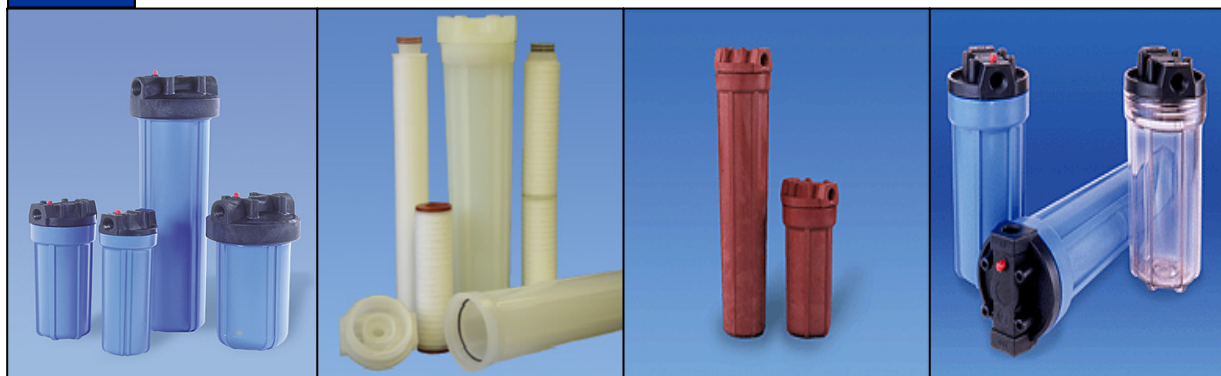
Cycle test: Tested to 150,000 cycles from 0 to 125 psi.  
 Burst test: Tested to 500 psi.



## Polypropylene Filter Housings

Filtertek comprehensive product line of industrial plastic housings.

- High temperature rated 93oC
- Natural housings ideal for high purity water
- Industrial blue or clear sump options
- Large or standard diameter sumps
- Full range of accessories & spares
- FDA & NSF listed polypropylene materials



Model	Size	A	B	C	D	E	F	G	H
# 5 *	5"	4.28"	1.57"	1.18"	0.16"	X	5.7"	7.0"	7.5"
#10 1/2"	10"	4.72"	1.57"	1.18"	1.18"	X	10.5"	11.0"	11.8"
#20 1/2"	20"	4.72"	1.57"	1.18"	1.18"	X	20.47"	21.26"	22.8"
#10 3/4"	10"	5.35"	2.22"	2.28"	0.23"	X	10.43"	11.49"	12.5"
#20 3/4"	20"	5.35"	2.22"	2.28"	0.23"	X	20.47"	21.26"	22.8"
#10 L.D.	10"	7.28"	3.03"	3.03"	0.275"	X	11.33"	11.57"	14.0"
#20 L.D.	20"	7.28"	3.03"	3.03"	0.275"	X	21.25"	21.65"	24.0"

# 5 \* - Please specify port size 1/4" or 3/8". All 5" housings available only with white head optional white sump or clear sump. No pressure relief option.

# 10 + # 20 housings supplied with pressure relief as standard. Please specify without pressure relief (suffix wo/pr) if no valve is required.

High temperature and natural housings are not available in large diameter design.

Large diameter clear sump vessels available upon request.